

KENTALROOF CONFORT 315 T2 1,5kW (27931290PA)

GENERAL DATA



ROOF FAN WITH HINGED SYSTEM AND ABS COWL

MANUFACTURING FEATURES:

- ABS protection cowl easily removable for access to motor and impeller thanks to the integrated folding system. The ABS cowl is characterized by its toughness, resistance to impacts and is able to withstand extreme ambient temperatures. 100% of the ABS used in the this cowl is recycled.
- The design of the cowl with a **rounded shape** is specific to minimize the risk of water ingress due to rain.
- Equipped with a **hinged system** to open the motor-impeller set. This system allows easy maintenance and cleaning of the set without the need to disassemble the entire structure. The opening is possible in 2 inclinations: approximately 45° and 90°, as required by the intervention.
- Structure in anticorrosive galvanized steel and support frame for adaptation to the roof with anti-bird protection grid.
- High-performance, backward-curved blade (reaction) impellers designed to work without scroll. Self-cleaning system, built in galvanized steel treated with anti-corrosion.
- Standard asynchronous squirrel cage motor with IP-55 protection and Class F insulation. Standard voltages 230V 50Hz for single phase motors, 230/400V 50Hz for three phase motors up to 4kW & 400/690V 50Hz for higher powers and 400V 50Hz for 2 speed motors.

APPLICATIONS

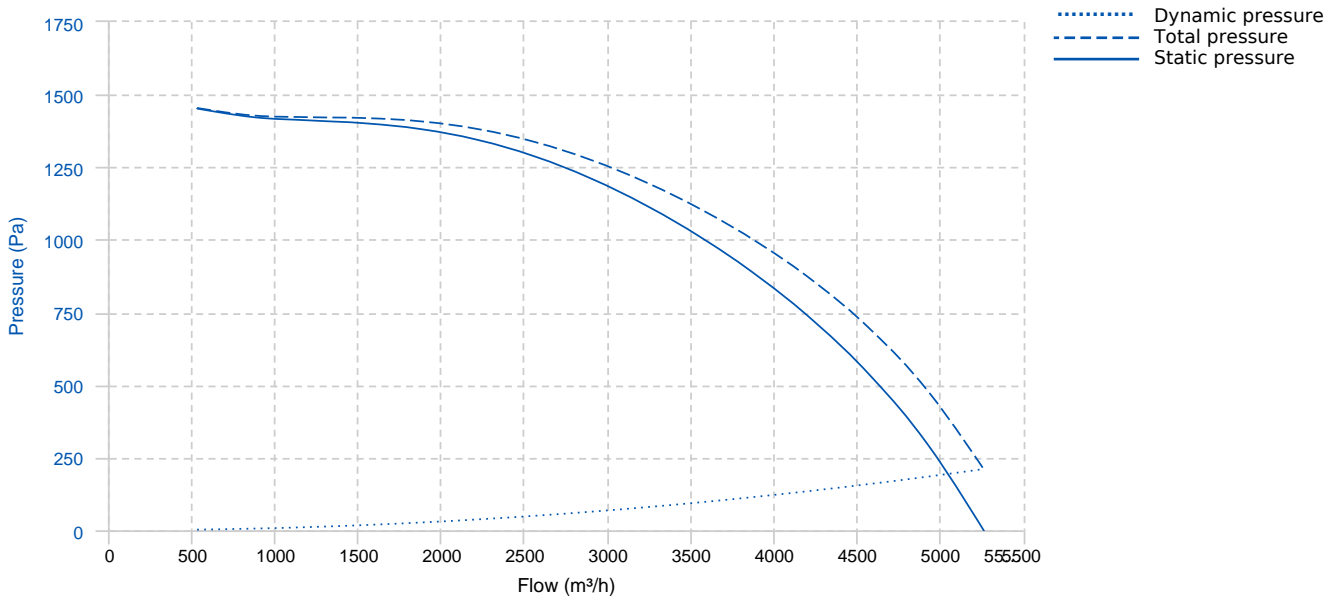
Designed for deck or roof mounting, they are indicated for:

- Smoke extraction.
- Air renewal in all types of buildings and industries.
- Maximum continuous working temperature: transported air 80°C, ambient 60°C to -25°C in three-phase motors.

UNDER REQUEST

- Special voltages.

PERFORMANCE CURVE

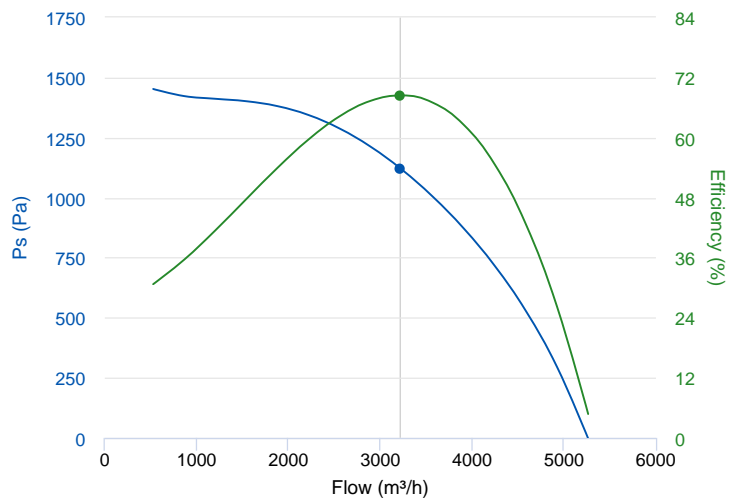


TECHNICAL DATA

Fan							
RPM	2865	Approx. weight	36 kg	Max. Flow	5260 m³/h		
Motor							
Power	1,5 kW	RPM	2865	I max. (230V)	5,83 A	I max. (400V)	3,14 A
Size	90L	Approx. weight	23.5 kg	Efficiency (%)	84.2 %	FP	0.83

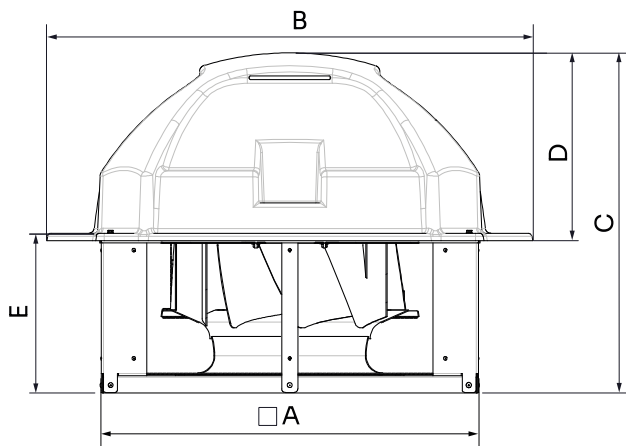
ERP DATA

Fan data sheet		
Fan type	Unit for non-residential ventilation (LOT 6)	
Typology	Unidirectional	
reports.other	None	
Type of driver	None	
Motor power (kW)	1.5	
	Fan values	ERP Requirements 2018
Max. efficiency (%)	68.42	44.76
Effic. Heat recovery (%)	-	
Pabs (kW)	1.562	
Flow (m³/h)	3218.58	
Static pressure (Pa)	1121.74	
Speed (m/s)	11.47	



	Fan values	ERP Requirements 2018
SFP (W/m3/s)	1746.92	

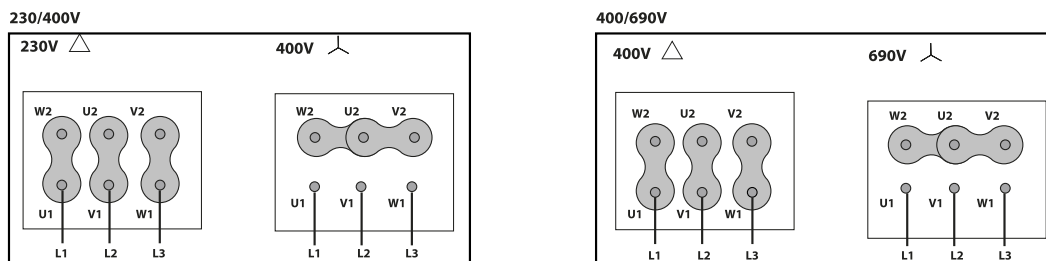
DIMENSIONS



Dimensions (mm)

A (int)	592	B	765	C	601	D	365	E	249
---------	-----	---	-----	---	-----	---	-----	---	-----

WIRING DIAGRAM



ACCESSORIES



SAFETY SWITCH
INT 25 3P A
REF: INT253PA



CIRCULAR SILENCER
SIL-C 315/315
REF: 960315315



CIRCULAR SILENCER
SIL-C 315/472
REF: 960315472



CIRCULAR SILENCER
SIL-CN 315/315
REF: 961315315



CIRCULAR SILENCER
SIL-CN 315/ 630
REF: 961315063



CIRCULAR SILENCER
SIL-C 315/ 630
REF: 960315063



CIRCULAR SILENCER
SIL-CN 315/472
REF: 961315472



CIRCULAR-CIRCULAR ANTI-VIBRATION FLANGE
BAD 9 (Ø300)
REF: 960003459



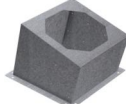
CONNECTION FLANGE
AC 300
REF: 960003209



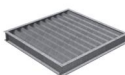
FREQUENCY SPEED CONTROLLER
SFC 230 I 7A *
REF: SFC230I007



FREQUENCY SPEED CONTROLLER
SFC 400 III 3,6A *
REF: SFC400III4



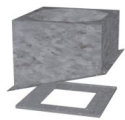
INCLINED ROOF FAN SUPPORT
BTI 570
REF: A-50870570XX



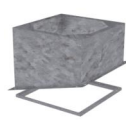
DEPRESSION DAMPER (HORIZONTAL or VERTICAL PLACEMENT)
CMP-HUT 300x310
REF: CMPHUT3031



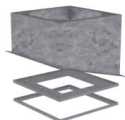
KENTALROOF VERTICAL DISCHARGE
KV KENTALROOF 315
REF: KVKNTR315



BTI + ACMP MOUNTED
BTI+ACMP 570
REF: BTIACMP570XX

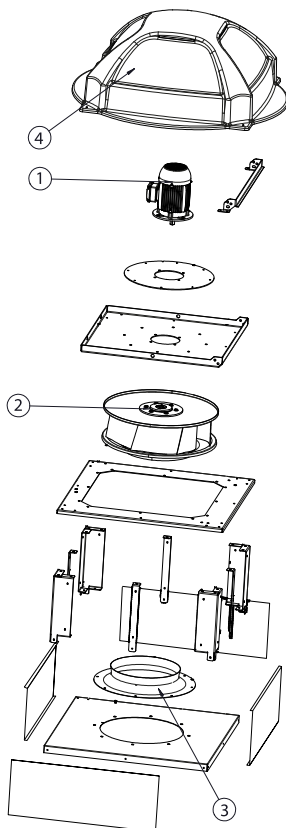


BTI + AMC MOUNTED
BTI+AMC 570
REF: BTIAMC570XX



BTI + ACMP+AMC MOUNTED
BTI+ACMP+AMC 570
REF: BTIACMPAMC570XX

SPARE PARTS



	Code	Model	Qty
1	721001047	MOTOR 1,5KW T2 B5 230/400V	x1
2	R-R63D1L315-24	IMPELLER R63D1L315x90x24 LG	x1
3	R-BAD315PK1	INLET CONE ED11P 315	x1
4	R-279314478	ROOF COWL ENKELROOF 310-355-450 KENTALROOF 315	x1